

Bass Bone

Ever Grande City

Go Ichinose/ Junichi Masuda

From Pokemon Ruby and Sapphire

Arr. Brandon Moore

Swing ♩=138

Musical score for Bass Bone, featuring measures 1 through 58. The score is written in bass clef, 4/4 time, with a key signature of one flat (Bb). The tempo is marked as Swing ♩=138. The score includes several measures of rests, indicated by '8' or '7' above the staff, and dynamic markings such as *mf*. The score is divided into sections A, B, and C, each marked with a letter in a box. Measure numbers are provided below the staff for every measure.

Measures 1-8: Rest (8)

Measures 9-10: Rest

Measures 11-14: Musical notation

Measures 15-16: Musical notation

Measures 17-24: Rest (8)

Measures 25-31: Rest (7)

Measures 32-33: Musical notation

Measures 34-36: Musical notation

Measures 37-40: Musical notation

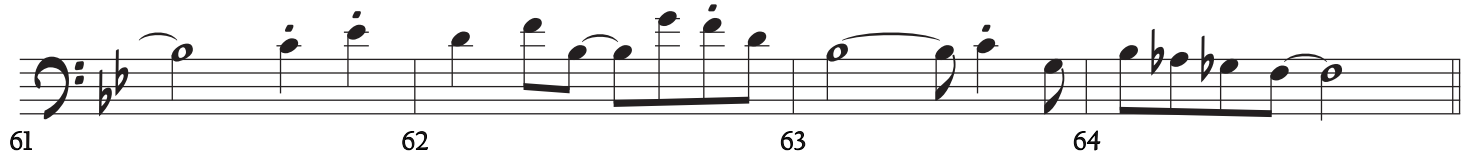
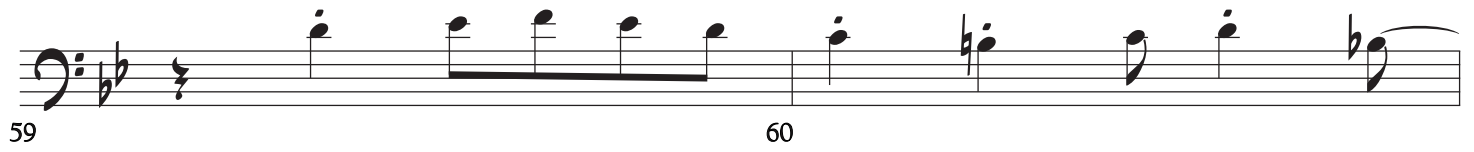
Measures 41-44: Musical notation

Measures 45-48: Musical notation

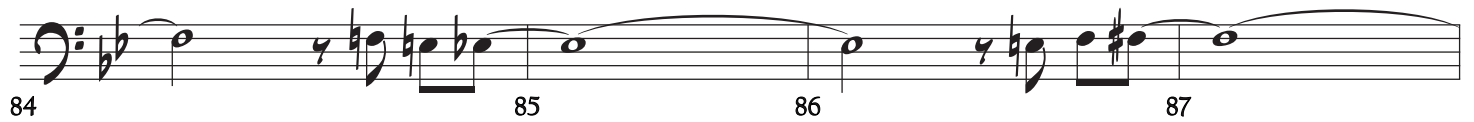
Measures 49-53: Musical notation

Measures 54-58: Musical notation

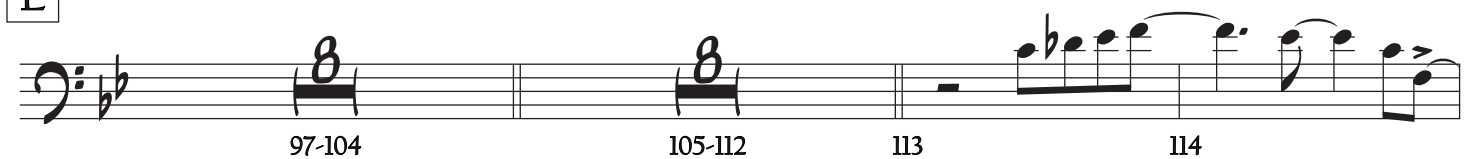
Ever Grande City - Bass Bone - pg 2



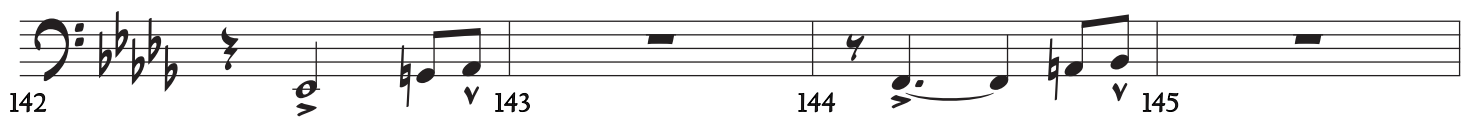
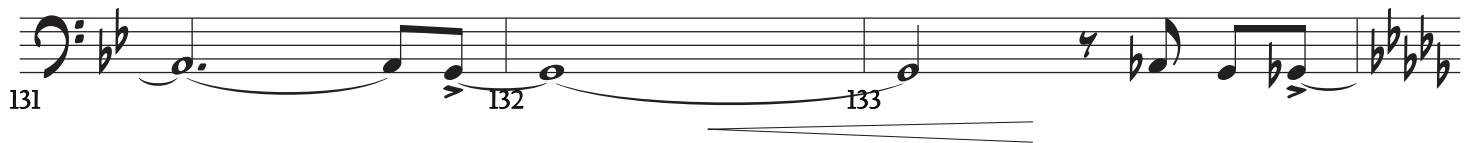
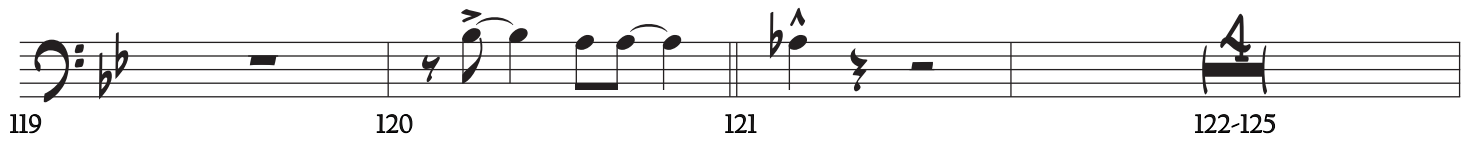
D



E



Ever Grande City - Bass Bone - pg 3



Ever Grande City - Bass Bone - pg 4

158 159 160 161

The image shows a musical score for the bass line of 'The Rose Tree'. The key signature is three flats (B-flat, E-flat, A-flat), and the time signature is 3/4. The score is written on a single staff. The melody starts with a quarter rest, followed by a half note G2, a quarter note A2, and a quarter note B2. There is a measure rest for two measures, followed by a quarter note G2, a quarter note A2, and a quarter note B2. The score ends with a measure rest for two measures.

162 163 164 165

The musical score for the bass line of 'The Rose Tree' is shown. It consists of a single staff in bass clef with a key signature of three flats (B-flat, E-flat, A-flat). The tempo is marked 'Allegretto' and the time signature is 3/4. The score includes measures 162 through 165. Measure 162 starts with a whole rest, followed by a half note G2, a quarter note F2, and a half note E2. Measure 163 starts with a whole rest, followed by a half note D2, a quarter note C2, and a half note B1. Measure 164 starts with a whole rest, followed by a half note A1, a quarter note G1, and a half note F1. Measure 165 starts with a whole rest, followed by a half note E1, a quarter note D1, and a half note C1. The piece ends with a double bar line.

170 171 172 173

178 179 180 181

The musical notation for measures 178-181 is as follows:

- Measure 178:** Bass clef, key signature of three flats (B-flat, E-flat, A-flat). The measure contains a whole rest.
- Measure 179:** The measure contains a whole rest.
- Measure 180:** The measure begins with a quarter rest, followed by a quarter note G2, a quarter note F2, and a half note E2. A slur is placed under the G2 and F2 notes.
- Measure 181:** The measure begins with a quarter rest, followed by a quarter note D2, a quarter note C2, and a half note B1. A slur is placed under the D2 and C2 notes.

182 183 184 185

186 187 188